



# Downtown Sanford VPI RAISE Grant Scope

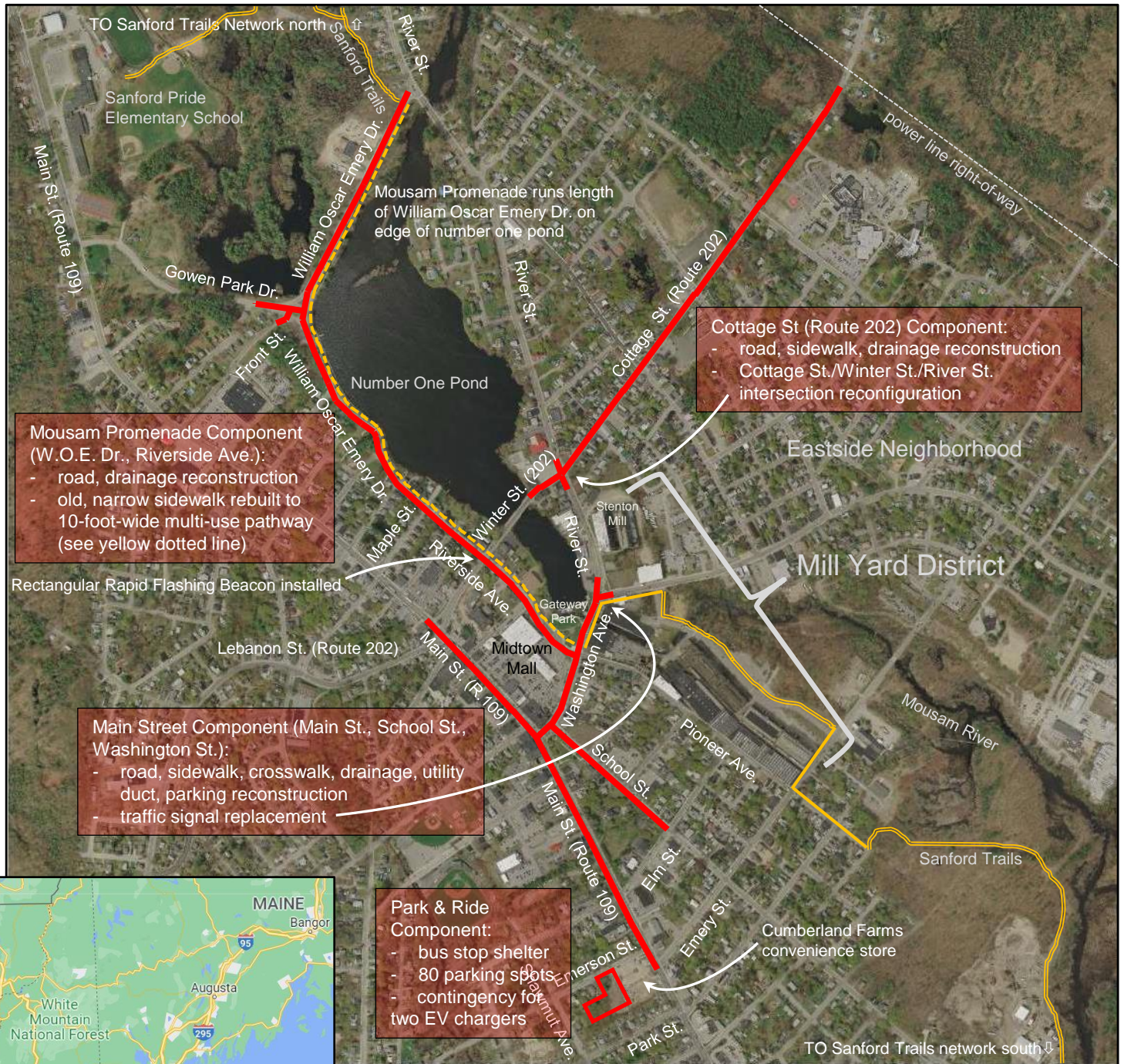
Sanford, ME



March 24, 2022

1 inch = 1000 Feet

www.cai-tech.com



**Cottage St (Route 202) Component:**

- road, sidewalk, drainage reconstruction
- Cottage St./Winter St./River St. intersection reconfiguration

**Mousam Promenade Component (W.O.E. Dr., Riverside Ave.):**

- road, drainage reconstruction
- old, narrow sidewalk rebuilt to 10-foot-wide multi-use pathway (see yellow dotted line)

**Main Street Component (Main St., School St., Washington St.):**

- road, sidewalk, crosswalk, drainage, utility duct, parking reconstruction
- traffic signal replacement

**Park & Ride Component:**

- bus stop shelter
- 80 parking spots
- contingency for two EV chargers

